

- they are used to switch on and off the electric circuit without power output to disconnect certain sections of line of the switching room
- **they meet:** EN 60 947-3
- **protection mode:** IP 00 (EN 60 529)
- **version:**
 - single-pole
 - two-pole
 - three-pole
- **control:**
 - manual
 - electromotive

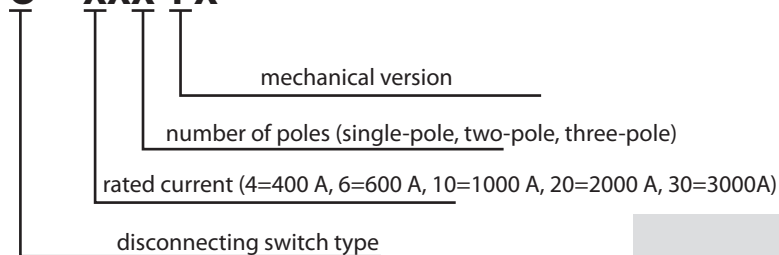
TECHNICAL DATA

Type designation	Rated voltage, V	Rated current, A	Nom. dynamic current, kA	Nom. short-term current 1 s, kA	Weight*, kg
O - 41	1000	400	50	15	3,5
O - 61	1000	600	75	20	4
O - 101	1000	1000	80	40	6
O - 201	1000	2000	80	40	9
O - 301	1000	3000	90	45	12
O - 43	1000	400	50	15	9
O - 63	1000	600	75	20	10
O - 103	1000	1000	80	40	21
O - 203	1000	2000	80	40	34
O - 303	1000	3000	90	45	45

* Weight of the basic version without accessories

TYPE DESIGNATION

O - XXX PX



Ordering data:

- disconnecting switch type
- rated voltage
- rated current
- mechanical version
- number of pieces
- rated voltage of the electric drive
(24V DC; 110V DC; 220V DC; 230V AC, 3x400V AC)

Overview of versions:

Type	Version	Description and accessories
------	---------	-----------------------------

O - 41, O - 61, O - 101, O - 201, O - 301

P 0 Basic version

O - 42, O - 62, O - 102, O - 202, O - 302

P 0 Basic version

O - 43, O - 63

P 1 Basic version and switching-off lever with eye

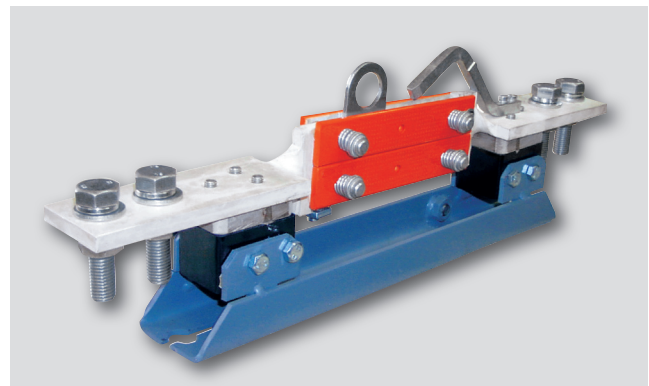
P 8 Basic configuration - disconnecting bar with an eye and signal contacts

O - 103, O - 203, O - 303

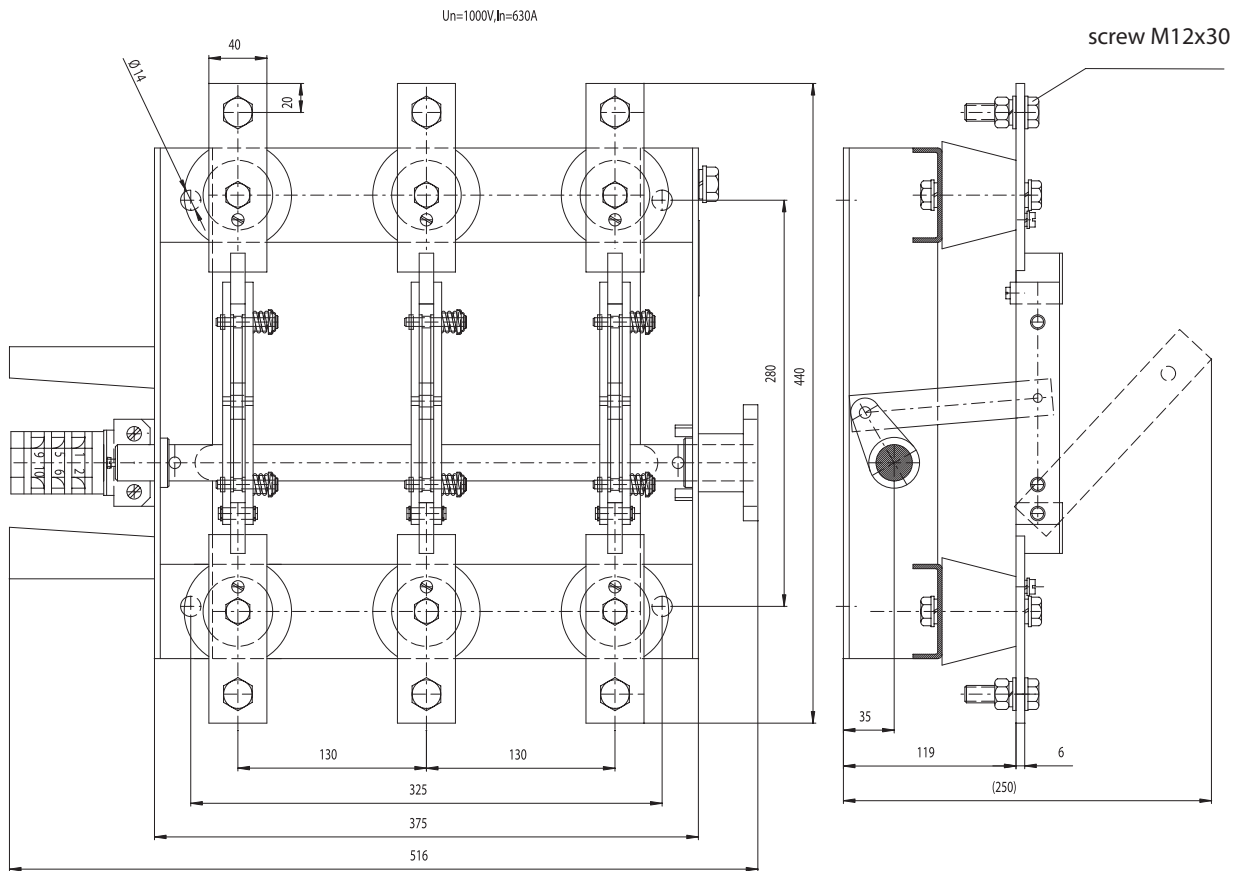
P 1 Basic version and switching-off lever with eye

P 8 Basic configuration - disconnecting bar with an eye and signal contacts

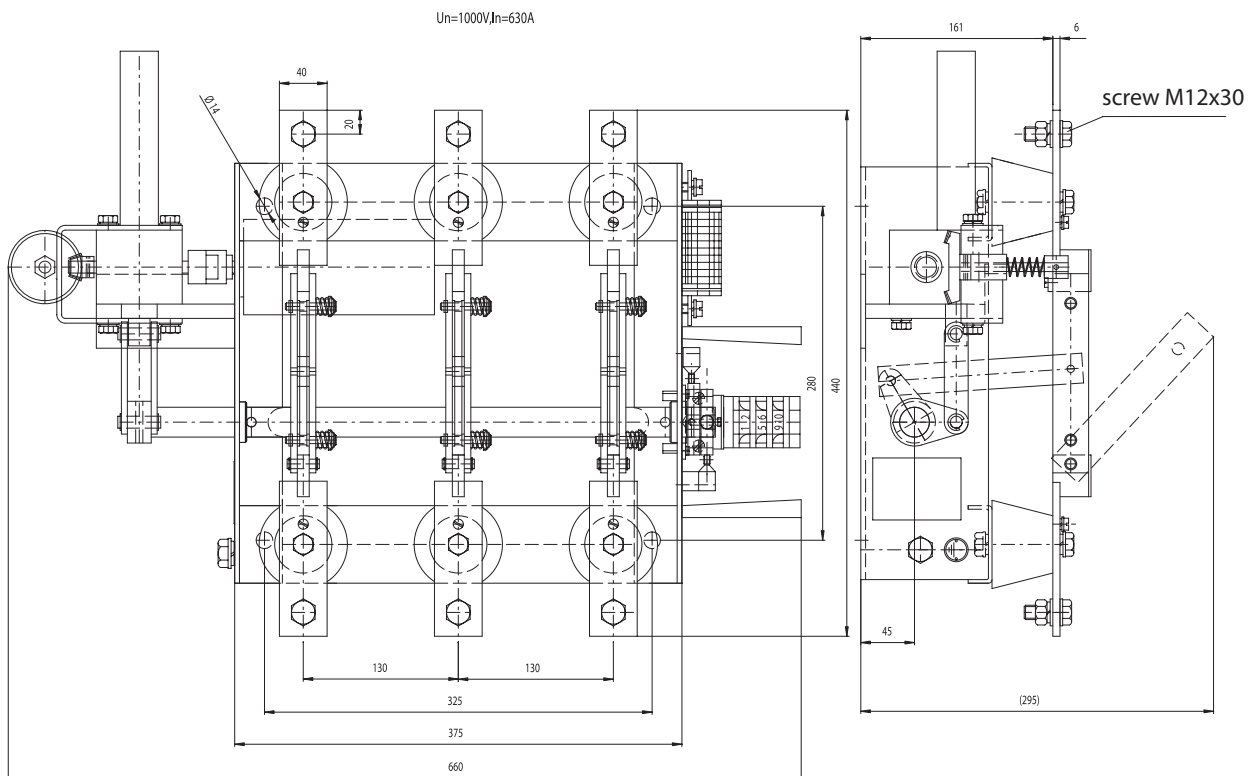
Note: The disconnecting switch shaft (to fasten the control accessories) is led to the right. This side is to be determined so that the bearing is down with the vertical position of the disconnecting switch. The signal contacts for the disconnecting switches of the „O“ type are produced and delivered in the version 3/3 i. e. 3 ON and three OFF signal contacts.



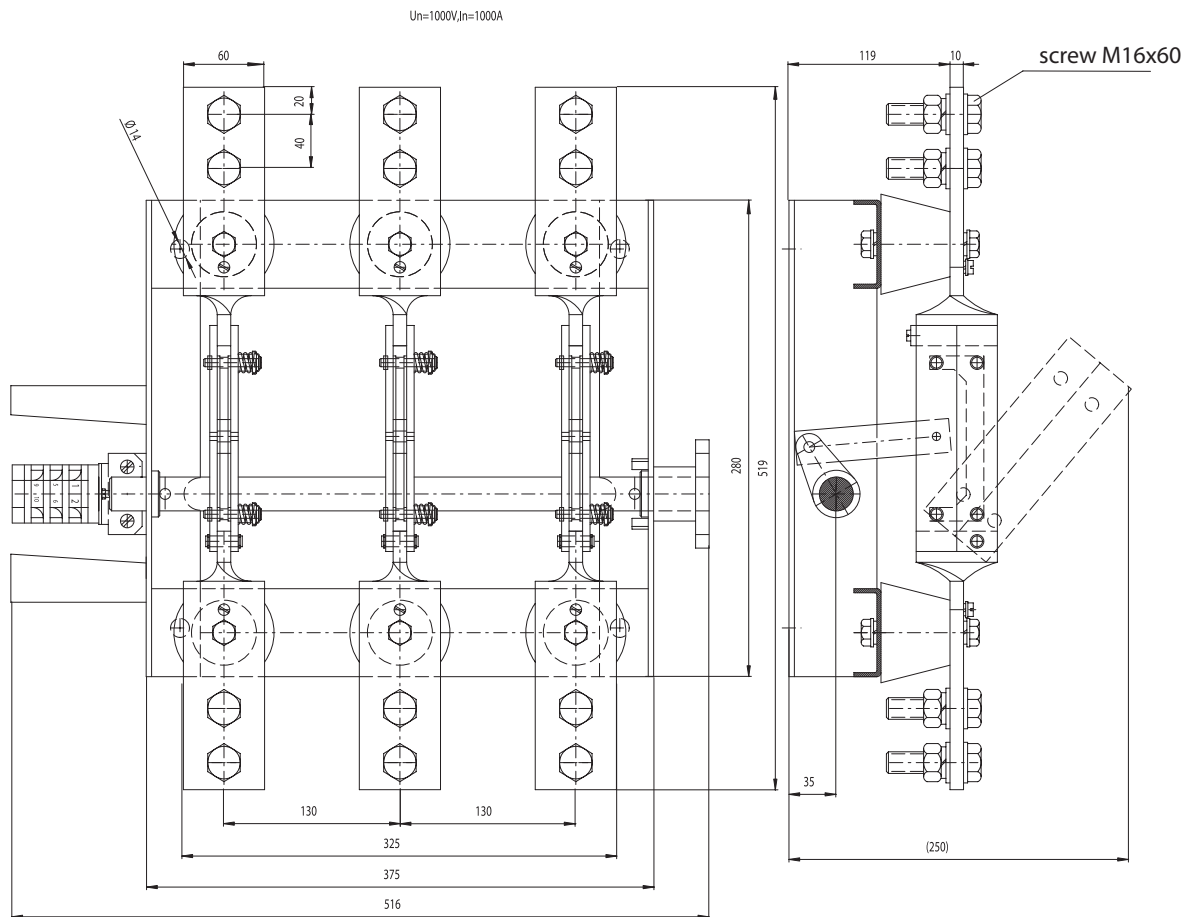
Three-pole disconnecting switch O - 63 R



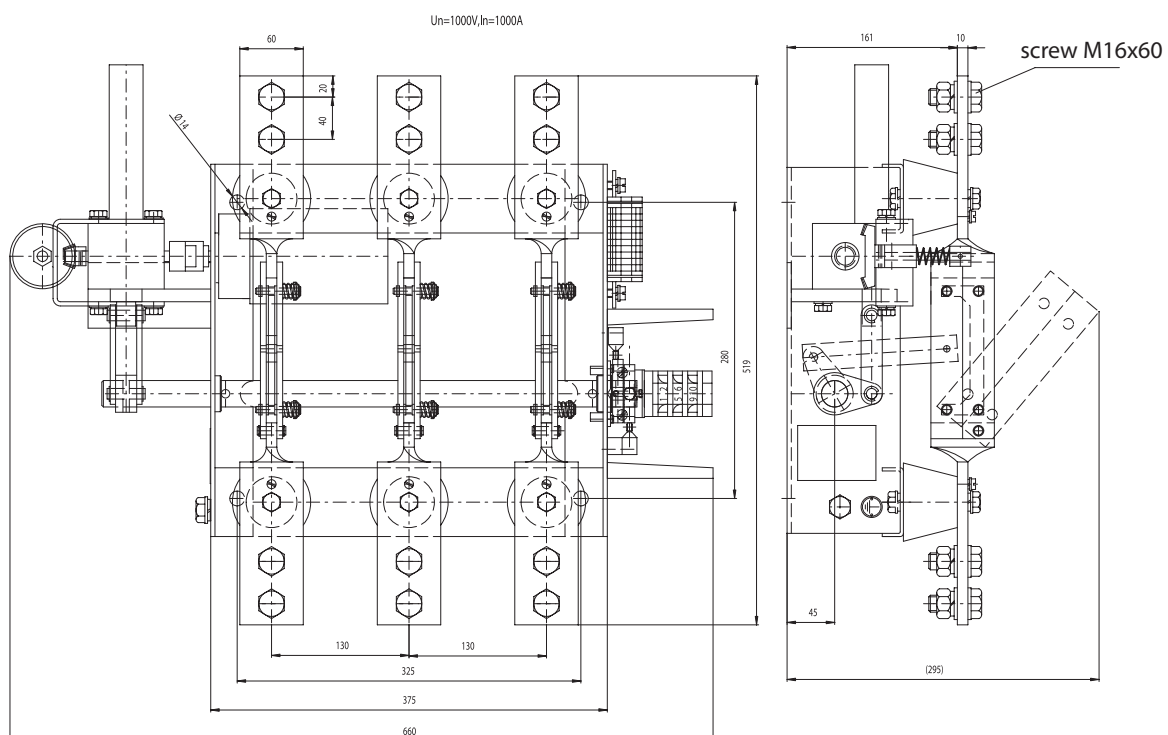
Three-pole disconnecting switch O - 63 with ETMP



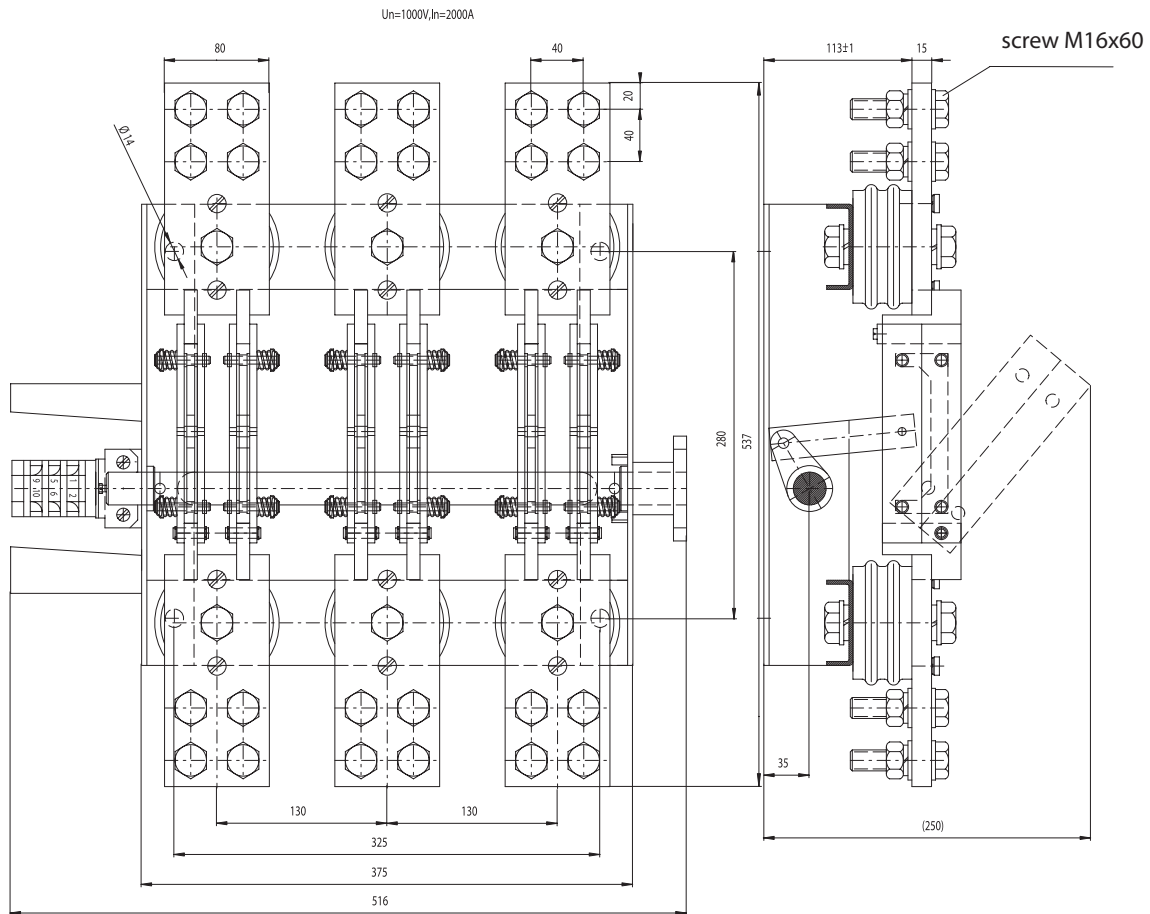
Three-pole disconnecting switch O - 103 R



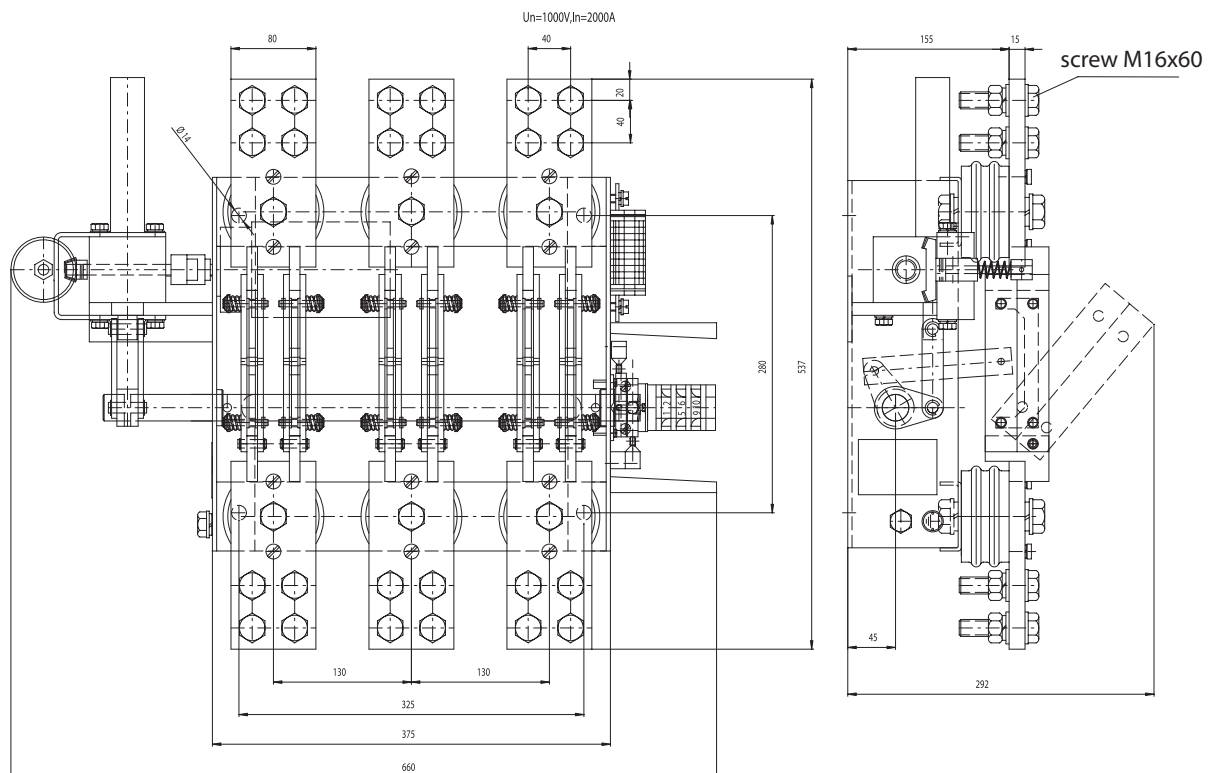
Three-pole disconnecting switch O - 103 with ETMP



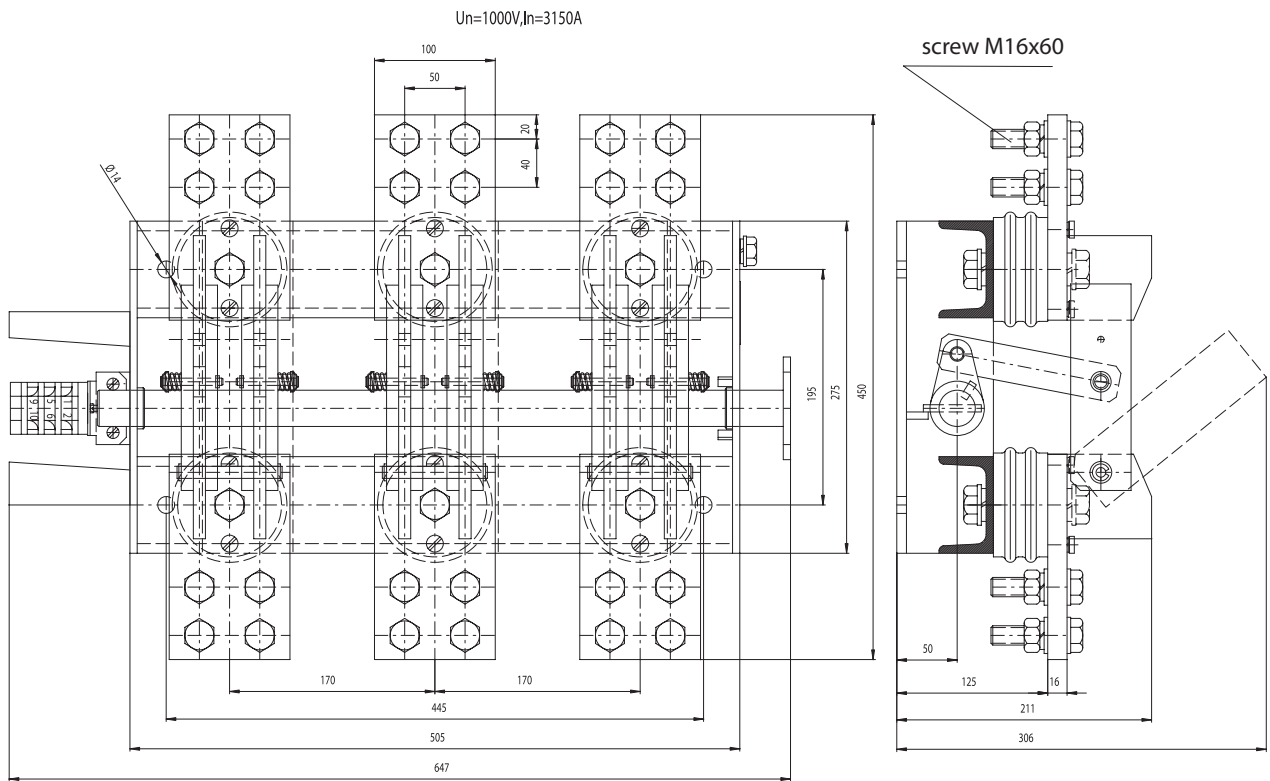
Three-pole disconnecting switch O - 203 R



Three-pole disconnecting switch O - 203 with ETMP



Three-pole disconnecting switch O - 303 R



Three-pole disconnecting switch O - 303 with ETMP

