

SEZ Motor protection switches MIS

MIS – motor protection switch with thermal and magnetic short-circuit release.

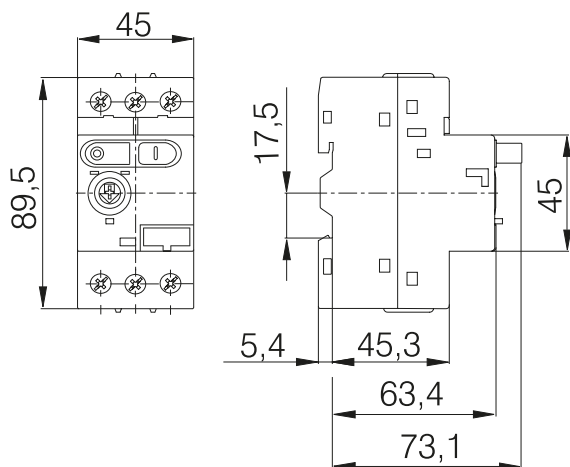
- reacts to phase failure in compliance with EN 60947-4-1, IEC 947-4-1, VDE 0660/102
- reliable protection especially at overloads and in certain cases also at short circuits
- simple and fast mounting by snap fitting on 35 mm wide mounting rail in compliance with EN 60715; fixing with two screws is also possible
- they are convenient also for mounting in an installation distribution box
- main application field: control (start-up, protection and switch-off) of AC electric motors with powers up to 11 kW (380/400 V) or other consumers up to 32 A; it can also be used as the main switch according to EN 60204 or VDE 0113 standards
- numerous accessories make the application field wider and enable the fulfillment of the majority of user's demands



Technical data

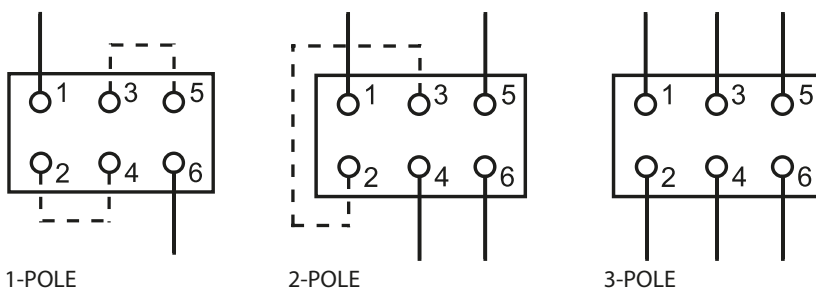
Type	Setting range (A)	Operating current (A)	Rated ultimate short-circuit breaking of short-circuit capacity (IEC 947-2, EN 60947-2) Icu (kA)								Max. Back-up fuses (GL,M) if short-circuit current exceeds breaking capacity MIS														
			230 V		400 V		500 V		690 V		230 V	400 V	500 V	690 V											
MIS 32-0,16	0,1...0,16	2	Switches are short-circuit proof for any value of prospective short-circuit current Icc.								No back-up fuses required. Breaking capacity > Icc														
MIS 32-0,25	0,16...0,25	3																							
MIS 32-0,4	0,25...0,4	5																							
MIS 32-0,63	0,4...0,63	8																							
MIS 32-1	0,63...1	12																							
MIS 32-1,6	1...1,6	20																							
MIS 32-2,5	1,6...2,5	33													5	5									
MIS 32-4	2,5...4	44													3	3								16	
MIS 32-6,3	4...6,3	75															6	4,5	3	2				35	35
MIS 32-10	6,3...10	120															6	4,5	3	2				50	35
MIS 32-14	9...14	160	25	12,5	25	12,5	6	4,5	3	2	80	63	50	50											
MIS 32-18	13...18	230	25	12,5	25	12,5	6	4,5	3	2	80	63	50	50											
MIS 32-23	17...23	270	25	12,5	25	12,5	4	3	3	2	80	80	50	50											
MIS 32-27	20...27	360	25	12,5	25	12,5	4	3	3	2	80	80	50	50											
MIS 32-32	25...32	400	25	12,5	25	12,5	4	3	3	2	80	80	50	50											

Dimensional drawing of MIS

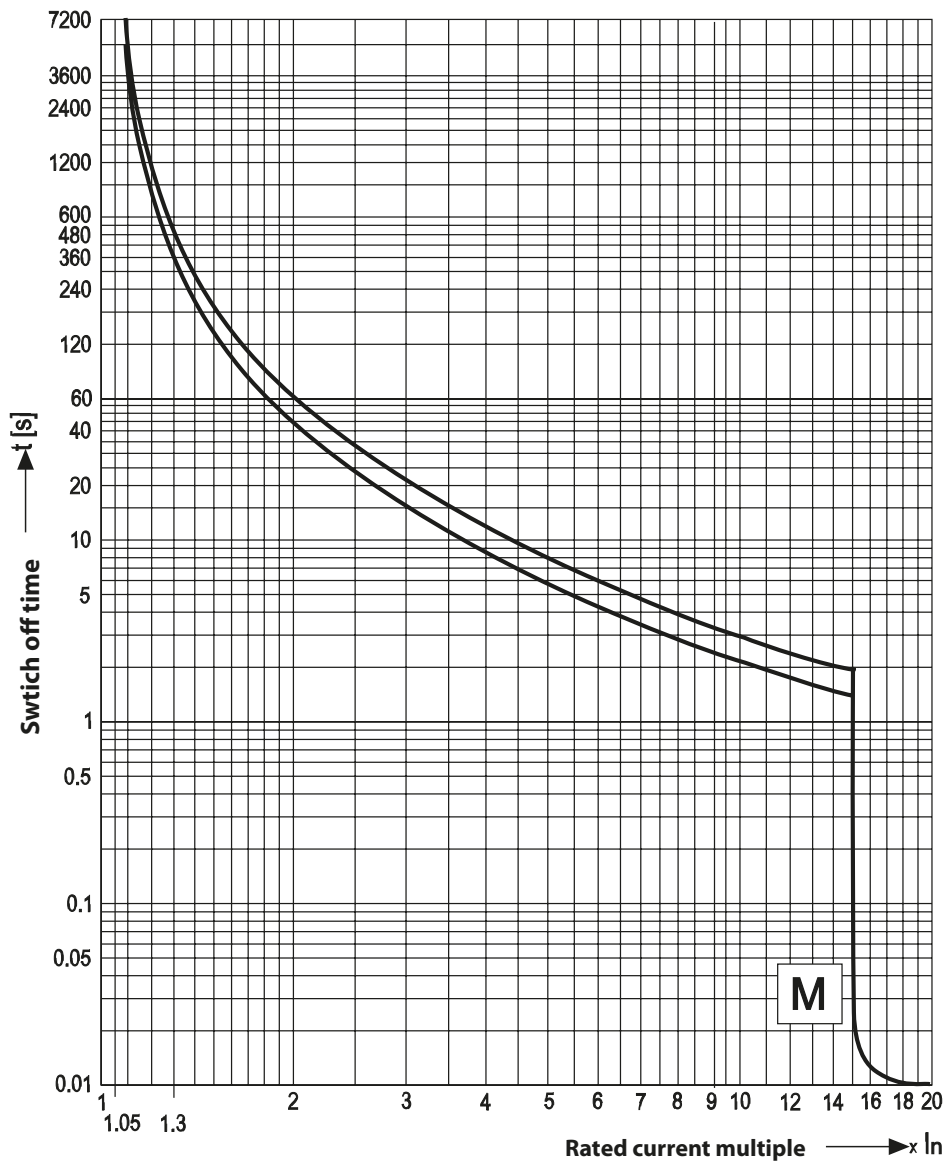


Type	Ordering number	Setting scale
MIS - 0,16	MIS32 - 0,16	0,1 – 0,16
MIS - 0,25	MIS32 - 0,25	0,16 – 0,25
MIS - 0,4	MIS32 - 0,4	0,25 – 0,4
MIS - 0,63	MIS32 - 0,63	0,4 – 0,63
MIS - 1	MIS32 - 1	0,63 – 1
MIS - 1,6	MIS32 - 1,6	1 – 1,6
MIS - 2,5	MIS32 - 2,5	1,6 – 2,5
MIS - 4	MIS32 - 4	2,5 – 4
MIS - 6,3	MIS32 - 6,3	4 – 6,3
MIS - 10	MIS32 - 10	6,3 – 10
MIS - 14	MIS32 - 14	9 – 14
MIS - 18	MIS32 - 18	13 – 18
MIS - 23	MIS32 - 23	17 – 23
MIS - 27	MIS32 - 27	20 – 27
MIS - 32	MIS32 - 32	25 – 32

Connection diagram



Instantaneous tripping characteristics of MIS

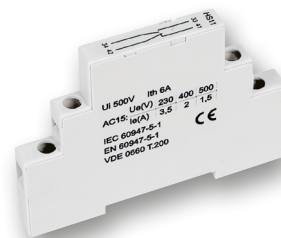


Selection MIS to electromotor

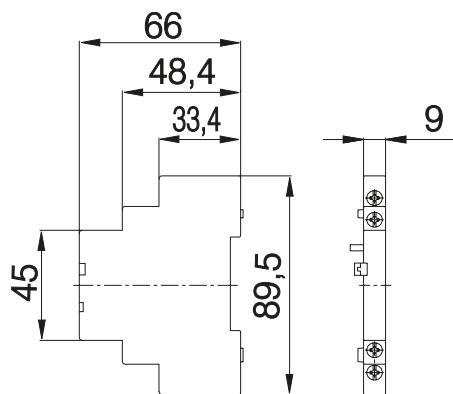
1-pole	3-pole					Setting range of thermal release
220 V 230 V 240 V	220 V 230 V 240 V	380 V 400 V 415 V	440 V	500 V	660 V 690 V	
(kW)						(A)
-	-	-	-	-	0,06	0,1...0,16
-	-	0,06	0,06	0,06...0,09	0,06...0,12	0,16...0,25
-	0,06	0,09	0,09...0,12	0,09...0,12	0,18	0,25...0,4
-	0,09	0,12...0,18	0,18	0,18	0,25	0,4...0,63
0,06...0,09	0,09...0,12	0,18...0,25	0,25...0,37	0,25...0,37	0,37...0,55	0,63...1
0,12	0,18...0,25	0,37...0,55	0,37...0,55	0,55...0,75	0,75...1,1	1...1,6
0,18...0,25	0,37	0,75	0,75...1,1	1,1	1,5	1,6...2,5
0,37	0,55...0,75	1,1...1,5	1,5	1,5...2,2	2,2...3	2,5...4
0,55...0,75	1,1...1,5	2,2	2,2...3	2,2...3	4	4...6,3
1,1...1,5	1,5...2,2	3...4	4	4...5,5	5,5...7,5	6,3...10
2,2	2,2...3	5,5	5,5...7,5	5,5...7,5	9...11	9...14
3	4	7,5	7,5...9	9...11	15	13...18
-	5,5	9...11	11	11	15...18,5	17...23
-	5,5...7,5	11	11	15	18,5...22	20...27
-	7,5	15	15	18,5	22	25...32

AUXILIARY CONTACTS HS 20, HS 10, HS11

Type	Ordering No.
HS20	MIS32 - HS20
HS10	MIS32 - HS10
HS11	MIS32 - HS11

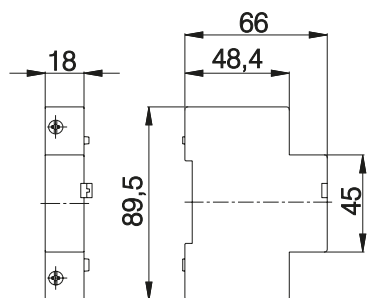


Dimensional drawing of HS



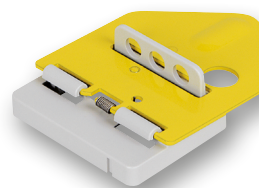
UNDER-VOLTAGE RELEASE UR, SHUNT RELEASE AR, 24 – 400 V; 50, 60 HZ

Type	Ordering No.
UR ...	MIS32 - UR
AR ...	MIS32 - AR



PADLOCK FEATURE HZ

Type	Ordering No.
HZ	MIS32 - HZ



PUSH-BUTTON DIAPHRAGM M

The manufacturer supplies also an enclosure and a front plate with protection degree IP 55 (O-55, CP-55); in this case the diaphragm is already mounted. However, it should be removed, if a lock or the emergency stop push-buttons are built-in.

Type	Ordering No.
M	MIS32 - M



Enclosure IP 41/55, HO-41/55, front plate IP 41/55, FP-41/55

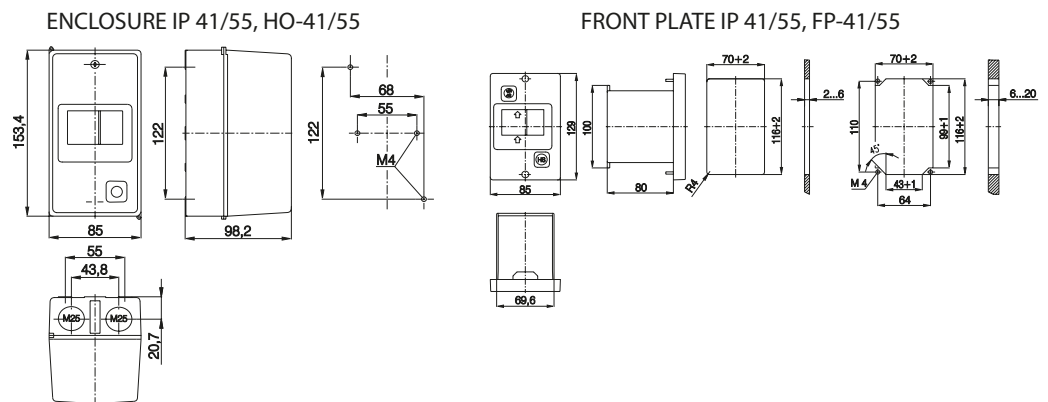


The MIS or MIST motor protection switch with all accessories can be built into an enclosure or in a front plate.
One N/PE neutral link is usually built in the enclosure or front plate. A place to mount additional neutral link is also available.

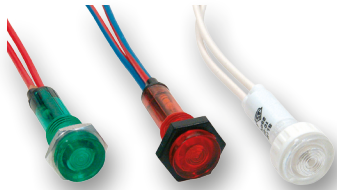
Type	Ordering No.
HO-55	MIS32 - HO-55
HO-41	MIS32 - HO-41
FP-55	MIS32 - FP-55



Dimensional drawing HO, FP



Signal lamp SS... 220,240,400V (B- white, R- red, Z- green)



Type	Ordering No.
SSB	MIS32 - SSB
SSR	MIS32 - SSR
SSZ	MIS32 - SSZ

Possibility ordering

- Relative auxiliary switch HRS, auxiliary flush type switch HSV
VERSION: HRS 01, HRS 10, HSV 01, HSV 10
- EMERGENCY STOP PUSH-BUTTON NAT,
is available also with a key.
- NEUTRAL LINK N/PE
One N/PE neutral link is usually built in the enclosure or front plate. A place to mount additional neutral link is also available.