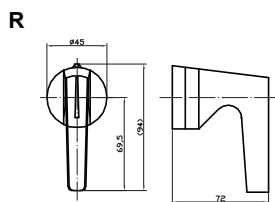
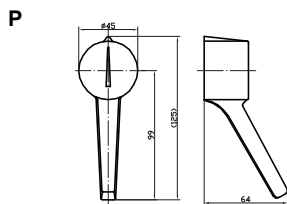
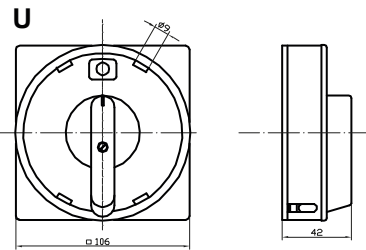
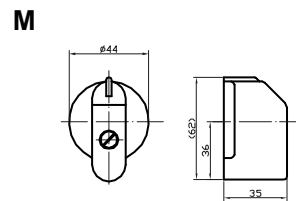
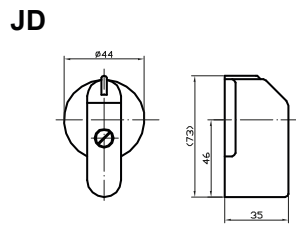
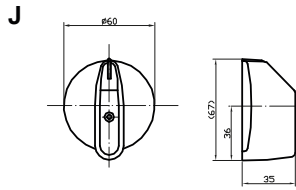


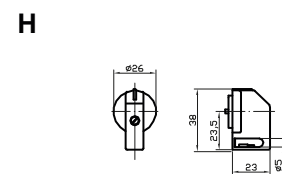
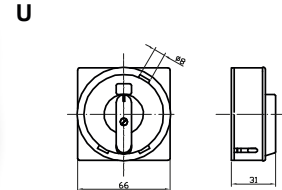
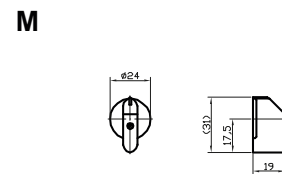
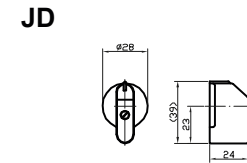
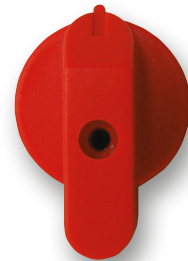
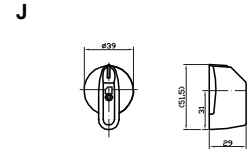
## FOR CAM SWITCHES S 63 - 160 J

### Winch 6x6



## FOR CAM SWITCHES S 6 - 40 J, SWITCHES K 16 - 32 J

### Winch 5x5



### TABLE OF THE ORDERING NUMBERS FOR SPARES PARTS FOR SWITCHES

handle name	symbol	Ordering number			
		Switches S 63 - 160 J		Switches S 6 - 40 J K 16 - 32 J	
		black	red	black	red
middle handle	J	1100846	1100847	1100870	1100871
middle handle	JD	1010500	1101550	1100524	1100525
small handle	M	1105982	1105983	1029002	1029003
handle for locking cilindric	U	1005901	1104774	1100436	1100437
handle for locking small	H	-	-	1029000	1029001
big handle	P	1033014	-	-	-
handle holder	R	1033016	-	-	-

**Note:** In type sign of cam switches is signed of the red handle - R