

- for switching the external medium voltage lines to the values of rated power.
- for OVE air arc chutes, OJC vacuum arc chutes
- **in compliance with:** EN 60694, STN EN 60 694, (354205)
EN 60 265-1, STN EN 60 265-1
- **insulators:** epoxy
- **work position:** horizontal
vertical
- **mounting:** BS, DS, double BS, edged mast, tower
- **pylon height:** 9; 10,5; 12 m
- **control:** manual (control lever lockable in both end positions)
electromotive (electromotive drive of the MPUO type) - provided with pull rod with the possibility of remote control.
- guide frame meets all requirements for dimensioning of the carrying frame in accordance with Czech and Slovak technical standard.

TECHNICAL DATA

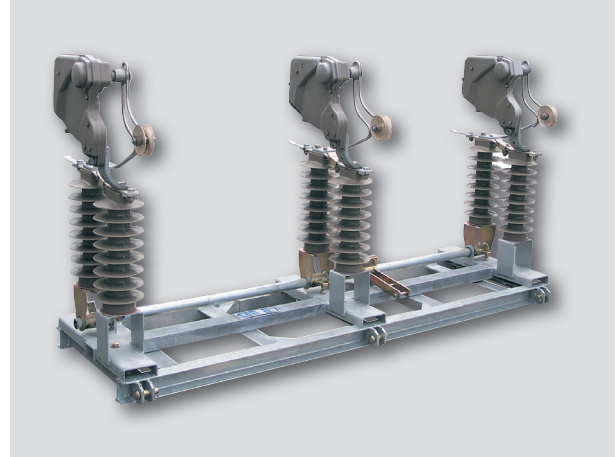
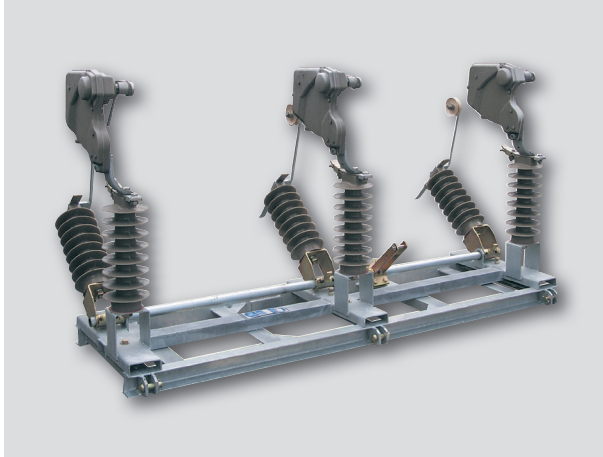
	OJC 25	OVE 25
Rated voltage	25 kV	25 kV
Rated current	200 A, 400 A	200 A, 400 A
Rated dynamic current	40 kA	40 kA
Rated short term current 1 s	16 kA	16 kA
Capacitive release current	10 A	10 A
Release current of a non-loaded transformer	10 A	-
Release current of the closed loop	400 A	400 A
Maximum current induced at make	10 kA	8 kA 50 x
Rated frequency	50 Hz	50 Hz
Number of ON/OFF cycles	3000	See the diagram on the page F2
Maximum declination of the line	30°	30°
Maximum line drift	10°	10°
Weight	105 kg	105 kg
Surface route	775 mm, 3,1 cm/kV	775 mm, 3,1 cm/kV
Contamination stage	II. - IV.	II. - IV.
Mechanical durability	3000 ON/OFF cycles	3000 ON/OFF cycles
Durability	30 years	30 years

Type designation	Rated voltage, kV	Rated current, A*	Rated release current A with $\cos \varphi=0,7$	Version
OJC 25 P0, OVE 25 P0	25	200	200	Concrete pylon, single suspension
OJC 25 P1, OVE 25 P1	25	400	400	Concrete pylon, single suspension
OJC 25 P2, OVE 25 P2	25	200	200	Concrete pylon, doubled suspension
OJC 25 P3, OVE 25 P3	25	400	400	Concrete pylon, doubled suspension
OJC 25 P4, OVE 25 P4	25	200	200	Wooden pylon, single suspension
OJC 25 P5, OVE 25 P5	25	400	400	Wooden pylon, single suspension
OJC 25 P6, OVE 25 P6	25	200	200	Wooden pylon, doubled suspension
OJC 25 P7, OVE 25 P7	25	400	400	Wooden pylon, doubled suspension

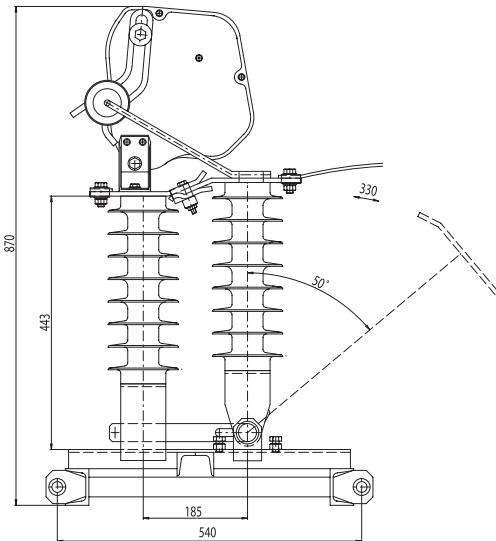
* the difference is the anchoring terminal type

It is possible to replace the air extinguishing chambers - type NPAK used in the switch disconnectors - type OVE 25 for vacuum. It is possible to equip the presently delivered switch disconnectors OVE 25 with vacuum extinguishing chamber by means of an adapter. When replacing the vacuum extinguishing chamber, it is necessary to replace the firm and movable auxiliary contact too.

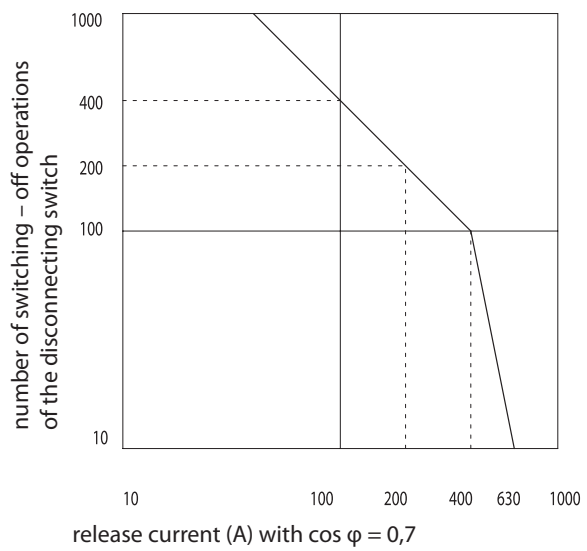
OVE



OVE 25



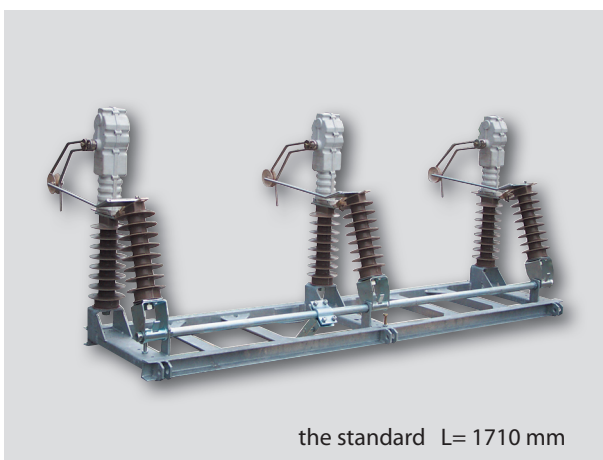
Switching ability of the switch disconnector OVE 25



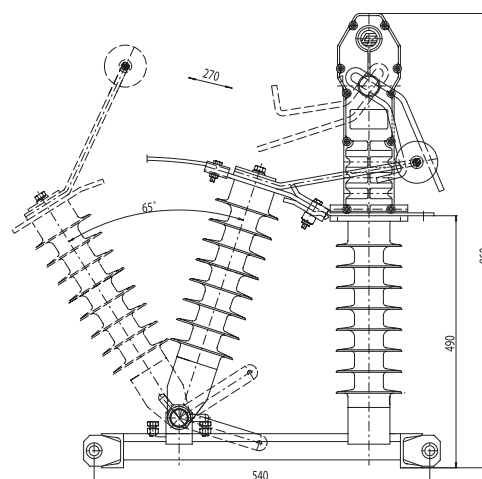
Axis distance phases: 800 mm

Note: any other axis distance phases shall be agreed with the producer.

OJC

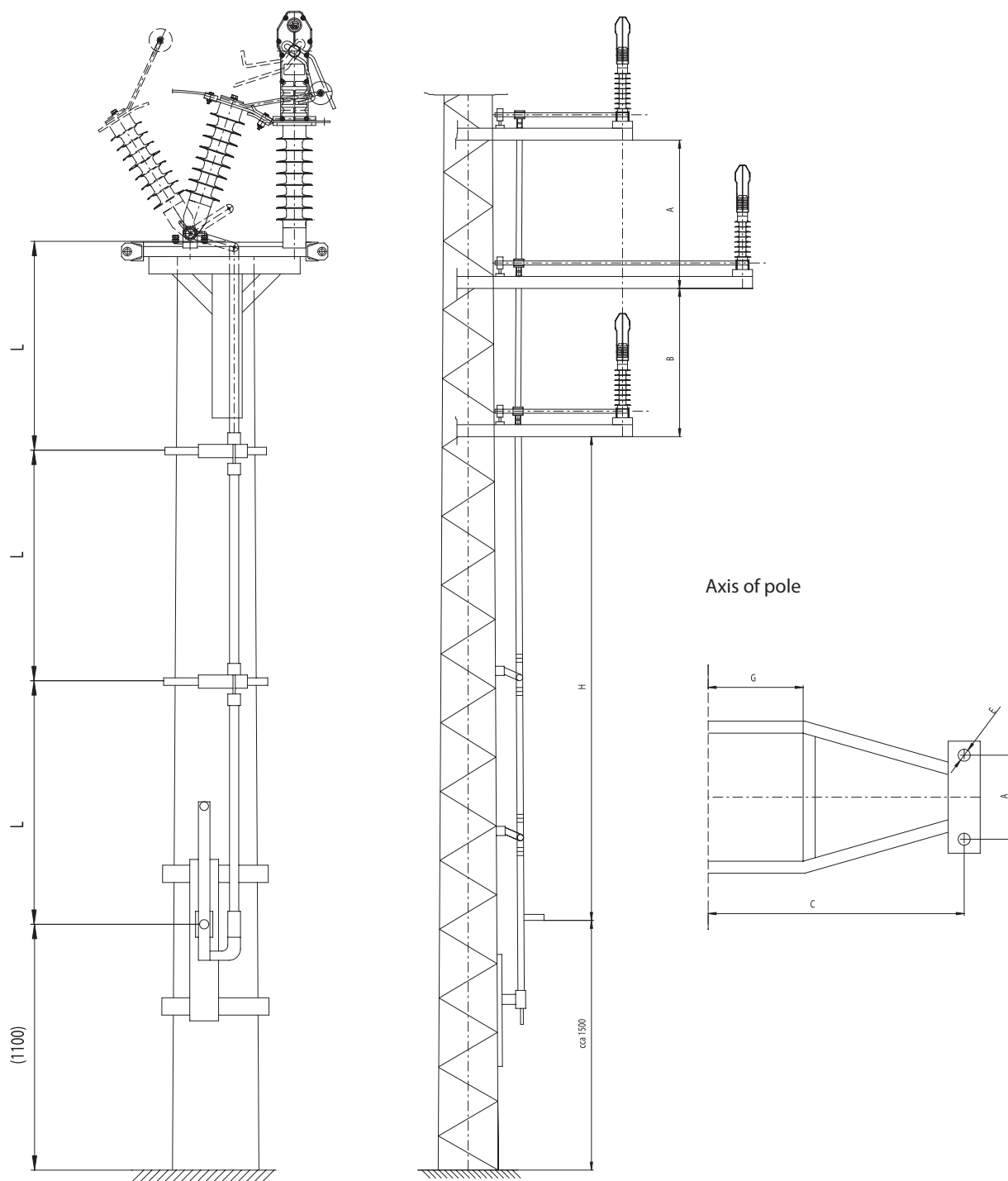


OJC 25



Assembly of OJC 25 on a concrete pylon

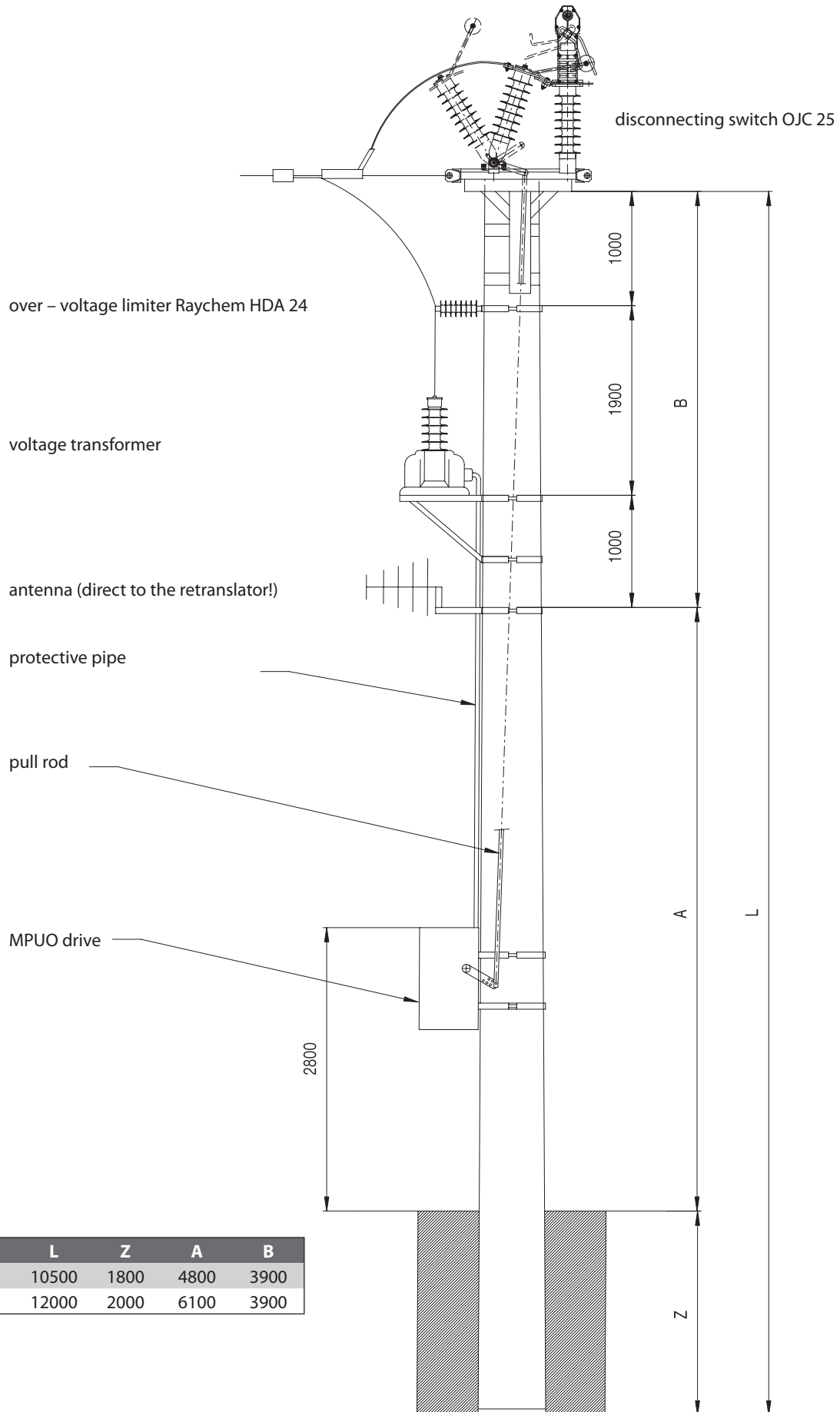
The complete of the switch disconnectors (section switch) with poles above each other (suitable for assembly on the derrick mast with the wires above each other).



L - according to requirement of the customer

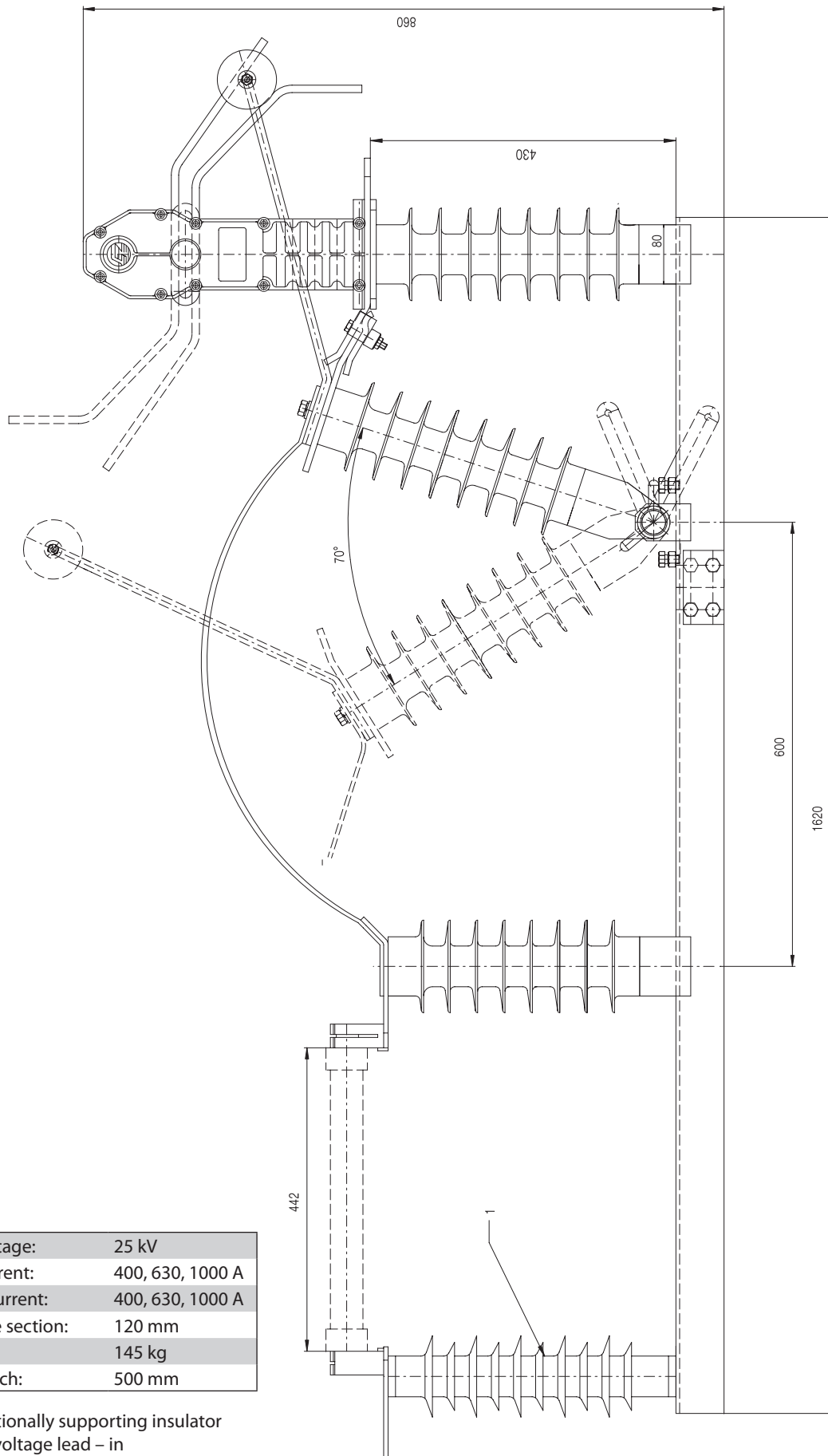
- Valid for OJC 25, OVE 25, UE 6, UVE 25

The complete of the remotely controlled switch disconnecter



Pylon	L	Z	A	B
10,5/6	10500	1800	4800	3900
12/6	12000	2000	6100	3900

OJC three-pole switch disconnector with fuse base



rated voltage:	25 kV
rated current:	400, 630, 1000 A
release current:	400, 630, 1000 A
max. wire section:	120 mm
weigh:	145 kg
phase pitch:	500 mm

pos. 1: optionally supporting insulator
or over – voltage lead – in