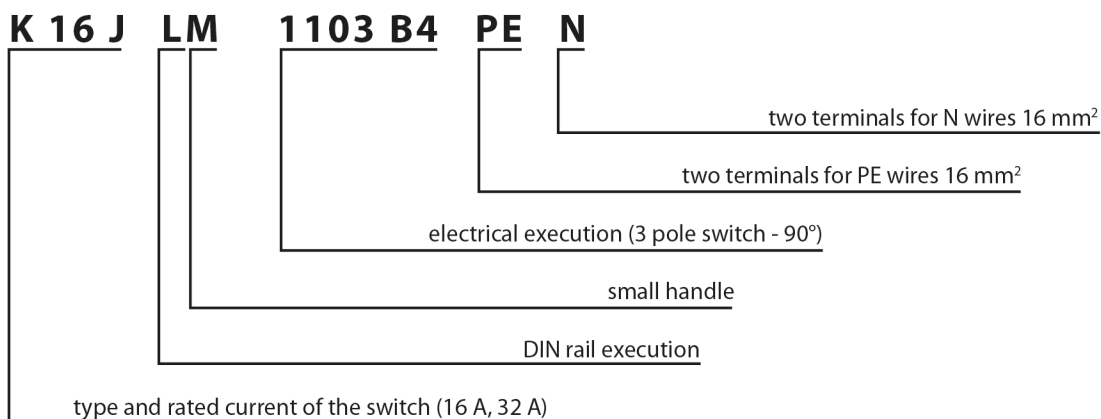


Use

Compact power switches K16J and K32J are 2 modules, 3poles switches of rated current 16A and 32A with switching angle 90°. Switches can be mounted on DIN rail, or on base plate with M4 bolts. They can also be mounted on the front panel of distribution box with 2 self tapping screws Ø 3,9. Access to heads of the screws for connection of conductors is in this case from the back side of the switch and the switch is without back fixing rail. O basic execution of 3 poles switches K16J and K32J you can add 4-th and 5-th switching pole, or PE and N poles. These units can be attached to the switches without screws from the left or right side. Extensions front plates of operatings elements, mechanical executions and numeric designation of electrical schemes are identical with cam switches S16J and S25J.

Example of type designation:



Technical data

TYPE		K16J	K32J
Standards		STN EN 60947-3	
Rated insulating voltage U_i	V	690	690
Rated impulse voltage U_{imp}	kV	4	4
Rated thermal current $I_{th} - I_{the}$	A	16	32
Output in AC3 at 500 V~ (motors)	kW	7,5	11
Rated operating current I_e v AC 23 A – 500 V~	A	16	32
Rated switching-on capacity	A	160	320
Rated switching-off capacity	A	128	256
Conditional short-circuit current with fuse 16, 35 A	kA	6	6
Mechanical endurance		100 000 cykles	100 000 cykles
Max. cross section of conductors	mm ²	16	16
Protection degree		IP 20	
		IP 40 from the front panel	
Switching angle		90°	
Ambient temperature	°C	-30 till +55	
Mounting		on panel, DIN rail 35 x 7,5	
Rated operating current I_e (A) at DC 22/21	48 V	16	32
	110 V	1	1
	220 V	0,5	0,5

Technical parameters for switching pole SP 16, SP 32 and range of connecting terminals for N32 and N16 are identical with data in chart – Technical data.

Execution:	Type:	Description:
* Switches with rear mounting	K...JLM	- with small handle for DIN rail or with screws
	K...JB	- with control on the door
	K...JP	- in plastic box with IP 65
Switches on panel	K...J	- with handle
	K...JM	- with small handle
	K...JG	- with handle and sealing for IP 65 (also for execution D,U...)
	K...JD	- with handle and front plate
	K...JU	- with lock and 3 padlock - cylindrical
	K...JH	- with locking padlocks on handle
	K...JF	- with LED signalling diode
Accessories	SP 16	- switching pole with terminals 7-8 or 9-10
	SP 32	
	PE 16	- nonswitched pole for two earthing conductors till 16 mm ²
	PE 32	
	N 16	
N 32	- nonswitched pole for conductors till 16 mm ² terminals for central conductors	

* For these types there is a possibility of adding front plate and lock with 3 padlocks U, small handle M and handle H.

Numeric designation of switches:

- 1102 B4 – 2 pole switch
- 1103 B4 – 3 pole switch
- 1104 B4 – 4 pole switch
- 1105 B4 – 5 pole switch

Application

- 2 to 5 poles switches in AC 21, AC 23 and AC 3 categories (switches for resistive and inductive loads, motors)
- switches in distributions with 3 and 5 conductors with PE a N terminals

GUIDE FOR AUXILIARY SWITCH SP

Auxiliary switch SP can be mounted to all types of switches K..J, due to increased number of switching poles from three to four or five.

For correct mounting, following conditions have to be observed:

1. For switches K16J use auxiliary switch SP16, for switches K32J use auxiliary switch SP32
2. Auxiliary switches with terminals marked 7 – 8 are mounted to the right side of switches K..J, auxiliary switches with terminals marked 9-10 to the left side of switches K..J.
3. Auxiliary switches SP with screw head from the front of the device (front of the device is marked with SEZ logo) are intended for attaching on mounting plate or DIN rail, i.e. for switches K..JL. Auxiliary switches with screw head from the back side of the device are intended for switches K..J, i.e. for gripping the switch from the front side.

Guide for mounting of SP:

1. Put contacts of the switch K..J to the closed position, i.e. handle in position „I“.
2. Slide the auxiliary switch onto switch K..J in the way that projections are directed to apertures of K..J. Slightly push the side of SP and both devices will join together.
3. The function of the device can be checked by changing the position of the handle of the switch to „I“ and „0“ and checking the closing and opening of the contacts of SP.

GUIDE FOR NON-SWITCHING POLE „N“ AND „PE“

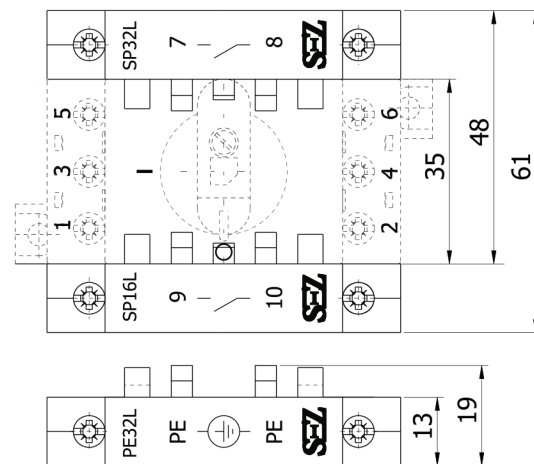
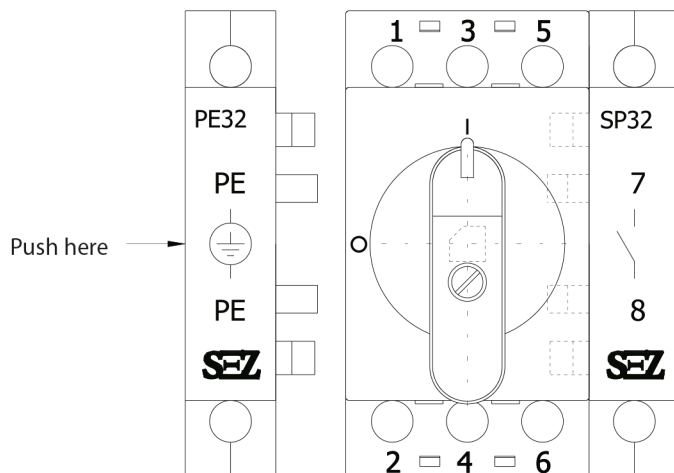
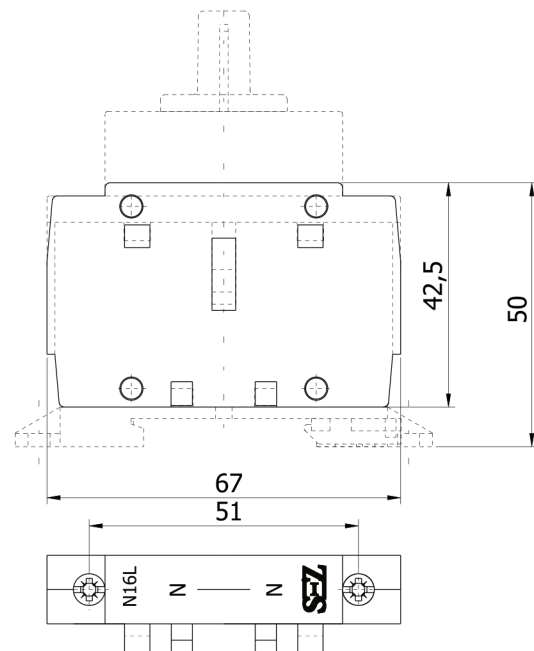
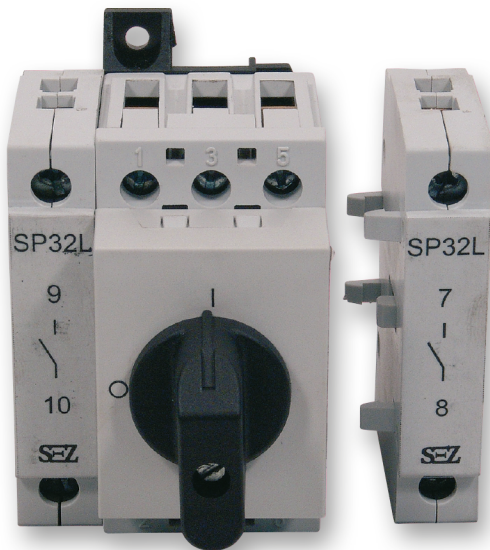
Non-switching pole „N“ and „PE“ can be mounted to all types of switches K..J, , due to increased number of terminals of the switch K..J for gripping the conductors N and PE.

For correct mounting, following conditions have to be observed:

1. For switches K16J use non-switching pole N16 or PE16 and for switches K32J use non-switching pole N32 or PE32.
2. Non-switching poles with terminals marked N-N are mounted to the right side of switches K..J, non-switching poles with terminals marked PE-PE to the left side of switches K..J.
3. Non switching poles N a PE with screw head from the front of the device (front of the device is marked with SEZ logo) are intended for attaching on mounting plate or DIN rail, i.e. with marking of the switch K..JL. Non-switching poles with screw head from the back side of the device are intended for switches K..J, i.e. for gripping the switch from the front side.

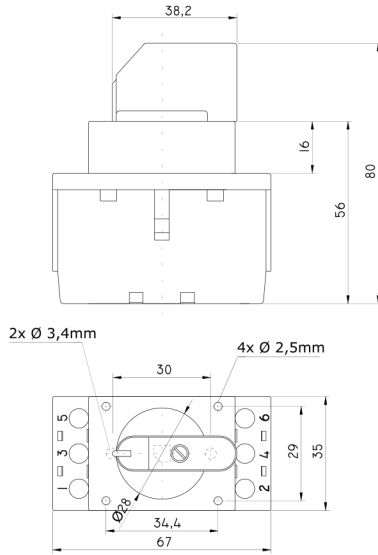
Guide for mounting of N a PE:

Slide the non-switching pole N, or PE onto the switch K..J in the way that projections are directed to apertures of K..J. Slightly push the side of N or PE and both devices will join together.

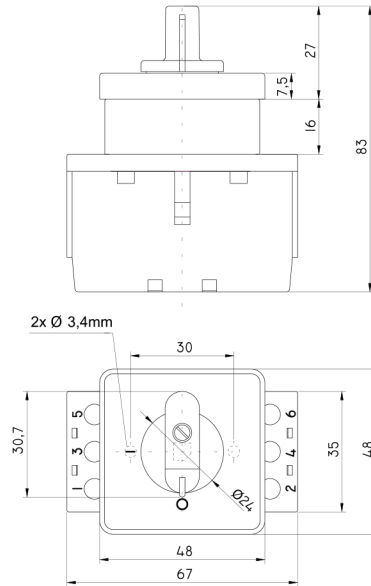


Dimensional drawing

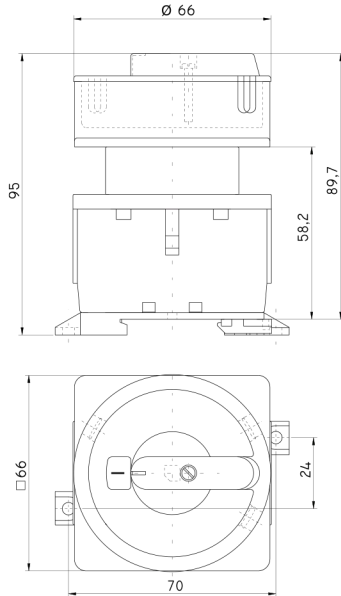
K 32 J



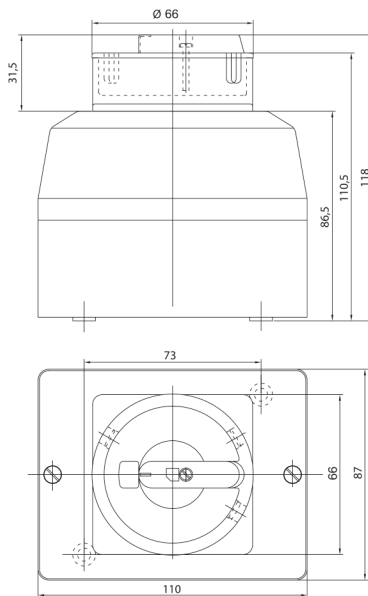
K 32 JDM



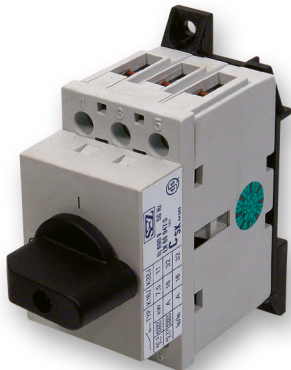
K 32 JLU



K 32 JPU



K 32 JLM



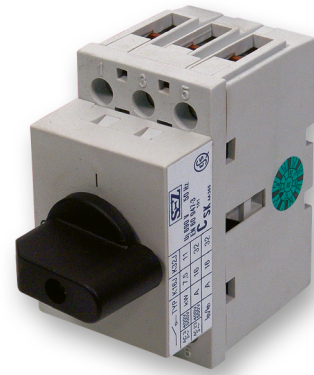
K 32 JU



K 32 JPM



K 32 JM



K 32 JD



K 32 JLU

