

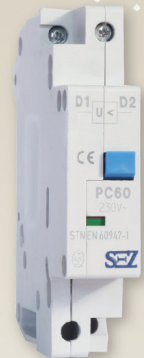


## Shunt trip - VC

- Accessories to the circuit-breaker PR 60, PR 60J, PE 60, modular switches RV 60 and residual current devices
- Utilized for the tripping of circuit-breaker (modular-switch) by means of outer source of voltage in instantaneous trip-ping of the circuit
- It is delivered as separate unit or assembled together with circuit-breaker (modular switch)
- It is mounted on right hand side of the circuit-breaker (switch), left side of residual current devices

## Undervoltage trip PC

- Accessories to PR 60, PR 120, RV 60, RV 120
- They are using to protection against rerun-up of motor by failure in mains
- Signalisation of release position green/red
- Auxiliary button for correct function control
- Mounting to circuit breakers in mill

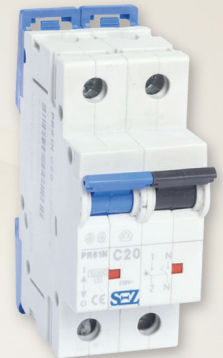


## Auxiliary and signal contacts PKJ, 2PKJ, PKJ+SKJ (TEST)

- These are accessories to circuit-breakers PR60, PR60J, PE60, modular switches RV60, residual current devices
- Can be obtained as separate units or mounted together with circuit-breaker (modular switch)
- They are mounted on the left hand side of the circuit-breaker (modular switch) by means of pins and screws
- Serve for signalling of contact position of circuit-breaker

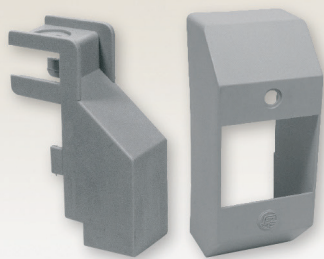
## N - POLE

- Assembling with circuit breaker at manufacturer's site according to the requirement of the customer
- Neutral pole can be assembled to all AC circuit breakers PR61 and PR63 (current ratings, tripping characteristics)
- Neutral pole is without release, on making of circuit breaker it makes before the other contacts and during breaking it breaks after the other poles
- On ordering of neutral pole please state type and ordering number of the circuit breaker and type and ordering number of the neutral pole



## Covers of terminal - KPS 1, KSP 3

- Accessories to the circuit-breaker PR 60, PR 60J, PE 60, and modular switches RV 60...
- Used for the improving of degree of protection to value IP 30 and together with sealing blind also for sealing of terminals
- Single pole cover of terminals KSP 1 do not increase width of module of circuit breaker (modular switch); for the protection of both terminals two covers are needed
- Three pole cover of terminals KSP 3 is applicable only for PR 63 and RV 63; the width of three pole module will change from 52,5 to 57 mm. For the fixing of cover to circuit-breaker (modular switch) there is necessary sealing blind PZ



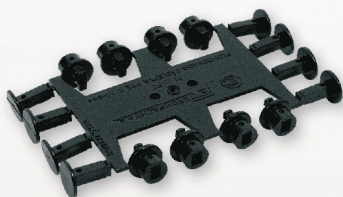
## Locking of operating means - UP

- Accessories to the circuit-breaker PR 60, PR 60J, PE 60, RV 60...
- Utilized for the safety locking of operating means in closed or open position of circuit breaker (modular switch) by means of padlock with maximum diameter of shank  $\varnothing 4,5$  mm



## Sealing blind - PZ

- Accessories to the circuit-breaker PR 60, PR 60J, PE 60 and modular switches RV 60...
- Utilized for sealing of single pole covers KSP 1 and three pole covers KSP 3 and for mounting three pole covers KSP 3 too
- For sealing can be used sealing wire with maximum diameter  $\varnothing 1,5$  mm



## Clips - PPL, PL, PP

- For sealing can be used sealing wire with maximum diameter  $\varnothing 1,5$  mm
- Flexible clip on rail PPL and clip on rail PL are utilized for the fixing of circuit-breakers (modular switches) on DIN rail 35 x 7,5 mm;
- Clip on board is utilized for fixing of circuit-breakers (switches) on board by means of screws M4 or M5. For one device 2 clips are necessary;
- Standard circuit-breaker (modular switch) is delivered with clip PL and flexible clip PPL
- Clips can be replaced by simple withdrawal and insertion

